



CROUCHING SKELETON

Wiper motor

9 1/2 inch 1 inch PVC

45 degree 1 inch PVC

28 inch 1 inch PVC (I would recommend you use a 32" pipe. Then when you assemble the skeleton you have the option of repositioning the pelvis. At the most you will waste a few inches of pipe.)

2' bolt.....

4' bolt.....

2' screw.....

13 washers....

White zip ties

1 fender washer

2 bungee cords

You will also need various pieces of lumber and plywood to build box.

Spray paint: flat black and Ivory

"Pose and Stay" skeleton

Using a heat gun, flatten the last few inches of the long pipe. Drill a hole the appropriate size for the motor shaft in the flat portion.



Paint the two PVC pipes and the 45 degree 1' PVC joint flat black, (or whatever color makes it less noticeable against your background.). (If you can find black PVC 1" pipe that would be better.)

You will need to disassemble a “Pose and Stay” skeleton.



Cut off the small knob just above the pelvis.



Cut the spine just above pelvis and remove the four vertebrae above it.

Remove cover over leg bolt



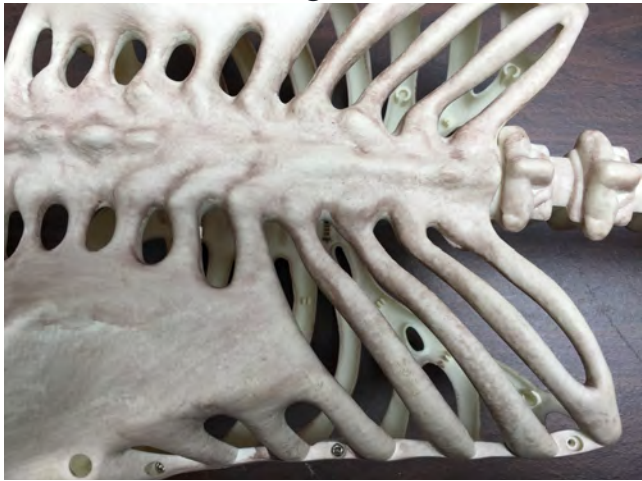
Remove spring, reattach bolt and screw the cover back on



Remove the feet and reattach them loosely with white zip ties.



Flip skeleton over and take out all the screws that hold on the front ribcage. Be careful to keep the screws and note which size screw goes into which hole. Take off front rib cage. Remove screws that hold the spinal cord to the back rib cage.



Remove arms and cut off section that connected to the shoulder socket.

Hold the skull in a straight line with the spine. Bend the skull back until it pops into place.



You might also need to remove hands at wrist, depending on how you will have them positioned when finished. I also make the thumb opposable and movable.



Cut off the thumb bone. Drill a tiny hole through each thumb bone. Reattach with a small screw, BUT attach the thumb of the opposite hand.



Using a heat gun or soldering iron bend bone to the shape you need. Try to bend at the joints and keep the bones straight.



Reattach hand with zip ties.



Drill appropriate holes and attach arm with zip ties.



Optional: Take off the jaw bone, modify teeth. Remove one of the knobs that hold the jaw on. Replace it with a small nail so the jaw will swing freely.



Drill three tiny holes.



Attach thin wire to jaw to create a lever to open and close jaw. Reattach jaw.



The dimensions for my box are 24 inches by 26 inches and 16 inches tall. You can make the box any size or shape. The important measurement is the distance from the hole to the center shaft of the wiper motor and the size of the hole. I mounted the wiper motor to the box so it was 10 ¼ inches from the shaft to the hole.





Attach the large pipe to the pelvis.

The short pipe, (with 45 degree joint), is attached to the upper spine and the rib cage is reattached.



The two sections are joined and the long pipe is bolted to the motor.



If the posture of the skeleton does not look right to you reposition the attachment of the pelvis.

Attach the feet loosely to the top of the box.



Attach two bungee cords from the bottom of the rib cage to the box. (Shown here without the back cloth for clarity.)

Most people have attached the hands of the skeleton to the thigh bones. I chose to have one hand hold onto an artificial branch and the other hand on a gravestone.



The paint will rub off by the hole. To cover this I attached a small section of plastic and then put a black cloth over the plastic.

